

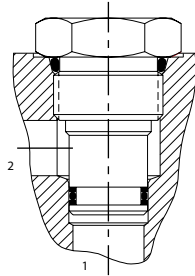
Accessories Catalog

Cavity Plugs (CP and SDC cavities)

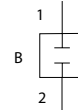
FUNCTION

Cavity plugs are used to block flow into and out of set ports or to block flow between given ports.

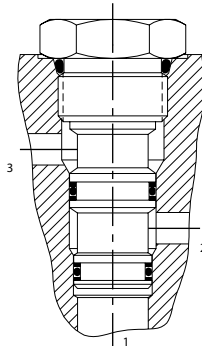
2 WAY PLUG



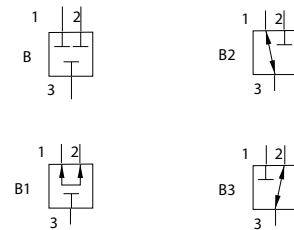
Plug options



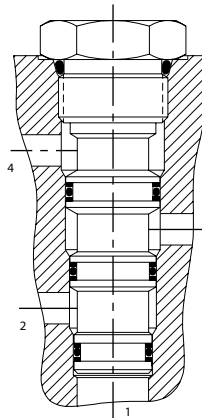
3 WAY PLUG



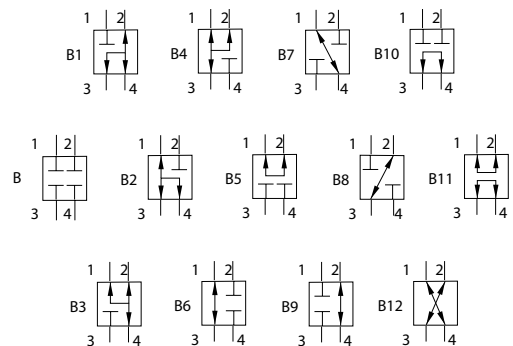
Plug options



4 WAY PLUG



Plug options



ORDERING INFORMATION

CP10 - B - 3 - B

Series	Configuration
04 - 4 Series	See schematics
08 - 8 Series	
10 - 10 Series	
12 - 12 Series	
16 - 16 Series	
20 - 20 Series	
Seals	Cavity type
B - Buna-N (std.)	2 - 2 Way
V - Viton (opt.)	3 - 3 Way
	3S - 3 Way (10, 12, 16 & 20 series only)
	4 - 4 Way

AC - Accessories
Cavity Plugs (CP and SDC Cavities)